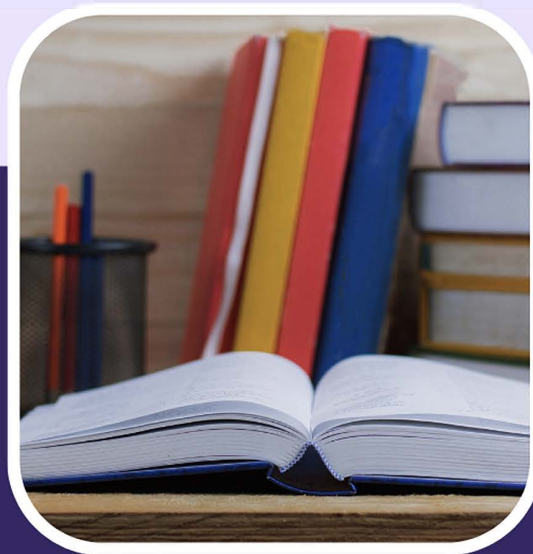




JOIN OUR RESEARCH
STUDY

TEACHER PERCEPTIONS OF EDUCATIONAL POLICY

We are looking for practicing K-12 teachers (including librarians, ESL teachers, etc.) in Tennessee willing to participate in a 1 time 30-60 minute zoom interview.



You will be presented with information related to recently enacted policy in TN and asked to share your thoughts in an interview format.

Your name and names of your school and district will be not be used and your answers will be confidential.

CONTACT INFORMATION:

Dr. Renee Moran
ricemoran@etsu.edu

Dr. Natalia Ward
wardna1@etsu.edu

ETSU

East Tennessee State University